

LASER IRIDOTOMY

PROCEDURE INFORMATION SHEET

ABOUT THE PROCEDURE

Laser iridotomy is a procedure to treat narrow angles, chronic angle-closure glaucoma, and acute angle-closure glaucoma.

During a laser iridotomy, the laser light is used to create a small hole in the iris that forms your pupil, which allows drainage of intraocular fluid.

Although a laser iridotomy is sometimes used to relieve a build up of pressure in your eye that is already underway, it is much more commonly recommended as a preventative measure before there are any symptoms at all. The impact of an acute-angle closure glaucoma attack is profound and irreversible.

WHAT IS ANGLE CLOSURE?

The “angle” that we refer to is the angle between the iris, which makes up the coloured part of your eye, and the cornea, which is the clear window front part of your eye. Narrow angles limit the outflow of fluid from the eye causing it to back up, which increases pressure in the eye. The elevated eye pressure can damage the optic nerve.

COMMON MISCONCEPTIONS

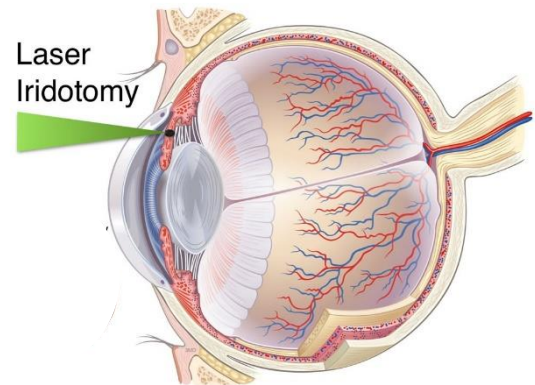
A laser iridotomy is a simple, commonly performed in-office procedure and is very safe. It should not be confused with lasers

used for corrective eye surgery like Lasik. Our laser is focused to only target the area requiring treatment.

WHAT TO EXPECT

Many people are concerned about possible pain and side effects of laser iridotomy. The procedure is nearly painless. Your eye is anesthetized with numbing eye drops, and a small lens is placed on the surface of the eye to help focus the laser.

During the laser procedure, you may feel a sensation that something happened or a pinprick sensation, or you may feel nothing at all. You may expect the laser to make a noise when it is activated.



YOUR APPOINTMENT

You should allow approximately **1 hour** for your appointment. This includes registration, diagnostic testing, the administration of eye drops, and if needed be a discussion with your ophthalmologist.

For the procedure, you will be seated in an upright position. The procedure is performed with the help of a slit lamp like

the one used during routine visit to look at your eyes.

You may be asked to wait for a few minutes after your procedure to ensure you are feeling well before you leave the clinic.

You may choose to take an over-the-counter pain medication (like Tylenol) about 15 minutes prior to your procedure as the drops used for this procedure may cause headache (or “brow ache”).

If you have a history of migraines or vasovagal syncope (i.e. fainting) please let us know prior to your procedure.

POTENTIAL SIDE EFFECTS

Most people do well after laser iridotomy and do not experience significant side effects.

ELEVATED EYE PRESSURE This is a short-lived side effect that occurs soon after the iridotomy is performed.

BLURRED VISION Your vision may be blurry after the laser iridotomy procedure. In preparation for the procedure, you will be given an eye drop that makes the pupil smaller and thins the iris tissue. This eye drop can blur your vision, as well as give you a brow ache or headache.

BLEEDING, SWELLING, INFLAMMATION

These are generally short-lived, typically reversible side effects after the laser procedure.

RETREATMENT Although uncommon, it is possible for the hole to close and retreatment may be needed. People of African or Asian descent tend to have thicker irises, and these eyes require more laser energy, sometimes two

different types of lasers, or several sessions to create a hole of the right size.

LONGER-LASTING GLARE OR HALOS One potential, but very rare side effect that could be longer lasting is glare or halos (“ghost images”). Your ophthalmologist will position the treatment relative to your eyelid to minimize this risk. If it does happen the brain usually will learn to adapt or ignore it over time. Your ophthalmologist can explain this in more detail should you experience it.

AFTER YOUR PROCEDURE

After the procedure you should expect that your vision may be temporarily blurry. Eye drops for the procedure can also blur your vision or cause light sensitivity.

RESTRICTIONS

Please keep your activities light (no lifting and straining) for the first 3 days.

You may be asked to use anti-inflammatory eye drops for a week after the procedure.

YOUR NEXT VISIT

We will schedule you for a routine appointment approximately 1 month after your procedure.

TEMPORARY SIDE EFFECTS

You may experience the following symptoms **temporarily** after your procedure.

Blurred Vision / Light Sensitivity / Redness
Minor Discomfort /

They will resolve in ~24-72 hours.